

Ryme

worldwide



GB ISSUE

Workshop Equipment



Table of Contents

Commercial Brake Testers	2-3
Mobile Brake Tester	4
Light Vehicle Brake Testers	5
Headlight Testers	6
Play Detectors	7
Emissions Equipment	8
Column Lifts	9
Two-Post Lifts	10
Four-Post Lifts	11
Full Platform Scissor Lifts	12
Short Platform Scissor Lifts	13
Commercial Tyre Equipment	14
Tyre Changers	15
Wheel Balancers	16
Wheel Alignment	17
EV Chargers	18
Electric Vehicle Bay Package	19
DEA Workshop Furniture	20
Packages	21
Steel Fabricated Pits	22



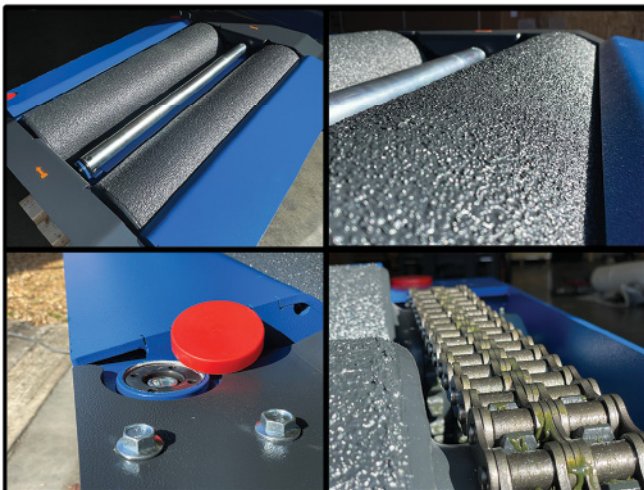
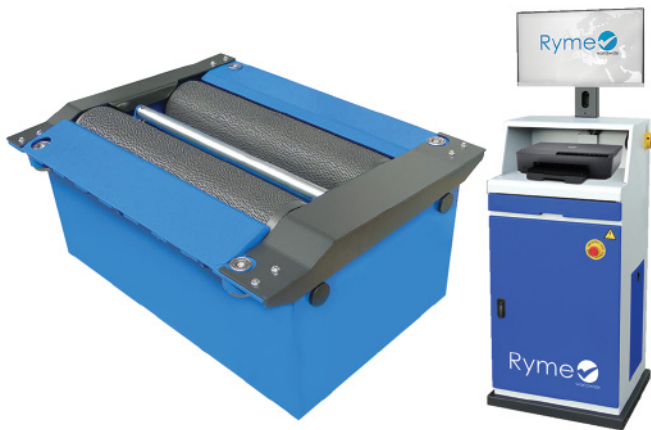
FRU 20 UK - Commercial Brake Tester

Max Load	20,000kg
Overall Width	1,150 mm
Overall Length	3,500 mm
Overall Height	680 mm
Roller Size	282/1,135 mm
Power Requirements	3 phase
Vehicle Class	All Vehicle Classes

The FRU 20 heavy vehicle brake tester is designed to test brake function of commercial vehicles with an axle weight capacity of up to 20T.

This brake tester comes equipped with operating cabinet and tablet device as standard making it suitable for solo brake testing. The cabinet also houses the electronics making it easy to service and maintain.

Our brake tester's come ready to install into a wide range of groundworks with minimal changes required making it as close to a turn key solution as we can make it.





SMRW software included

FRU 20 UK - Rising Roller Bed Commercial Brake Tester

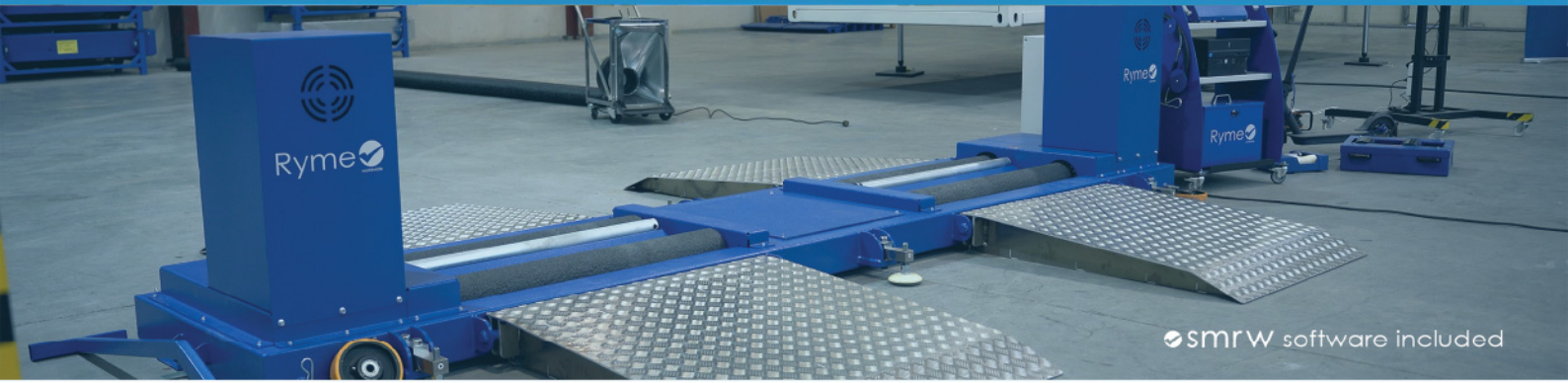
Lifting Capacity	24,000kg
Lifting Height	250mm
Compatibility	FRU-4
Hydraulic Cylinders	8
Dimensions	EPS, TCS, ABS, etc
Vehicle types	All Vehicle Types
Tank Location	External Tank to be mounted below or above ground

Rising rollers are there to simulate loads for heavy vehicles to allow a proper braketest around 65% of the gross vehicle weight(GVW). Our FRU 20 brake tester fits into the hydraulic case that lift he roller set allwoing for a true simulated brake test. This addition does not effect the overall weight limit of the FRU 20, with a lifting capacity of 24T. The total height the unti can rise is 250mm allowing for fast and effecient testing of a wide range of vehicles. The rising roller bed works from the same console as the brake tester reducing the amount of space needed on the workshop floor excluding the hydraulic tank which can be mounted below ground or in a recess in the pit.



Skate supplied with brake tester





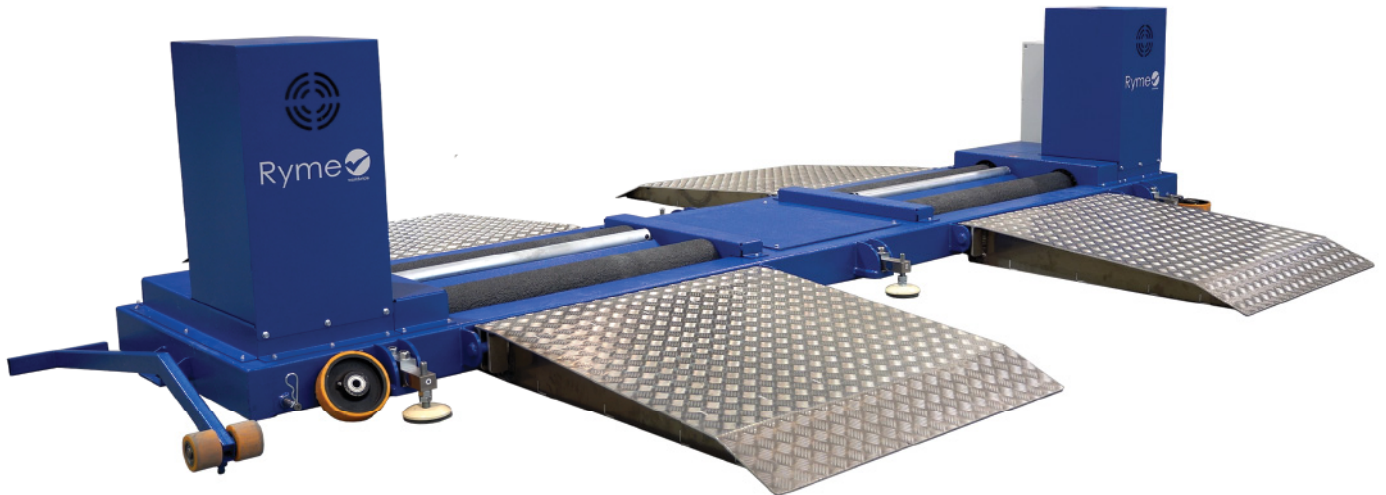
SMW software included

FRU Mobile Commercial Brake Tester

Maximum Test Capacity	20 Ton
Motor	2 x 11kW
Maximum Track Width	3100mm
Dimensions	4800mm(W) x 930mm(D) x 210mm(H)
Weight	1350kg
Power Requirements	63A 3ph + N + E, via commando plug
Roller Size	1350mm x 150mm
Control Method	Remote Tablet

The FRU Mobile Heavy Vehicle Brake Tester is designed to check the brake condition of vehicles with a maximum axle load of up to 20 T per axle. The FRU 20 UK Mobile is a full DVSA Spec commercial brake tester with access to DVSA/DTP database which is continually updated.

The fact the unit is mobile makes it a perfect solution when civil works are not an option



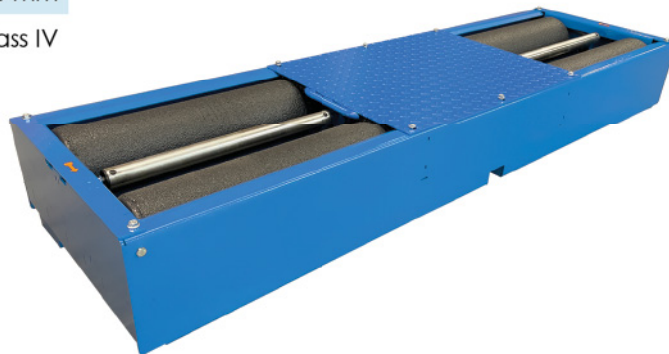


SMRW software included

✓ FRL - ATL 4

Max Load	3 T
Overall Height	290 mm
Overall Width	682 mm
Overall Length	2320 mm
Roller Size	208/830 mm
Vehicle Class	Class IV

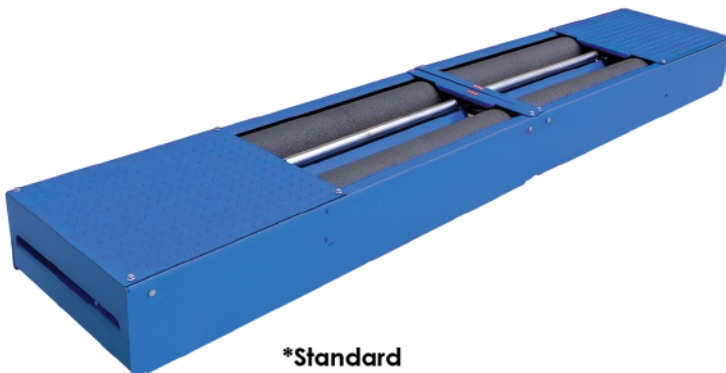
The FRL - ATL 4 is a light vehicle brake tester made to test class IV vehicles. With a test limit of 3000kg and a step over limit of 5500kg, this compact unit is suited for multi-purpose lanes that service class IV vehicles. Like our commercial brake tester, our circuit boards are kept remotely in the control cabinet.



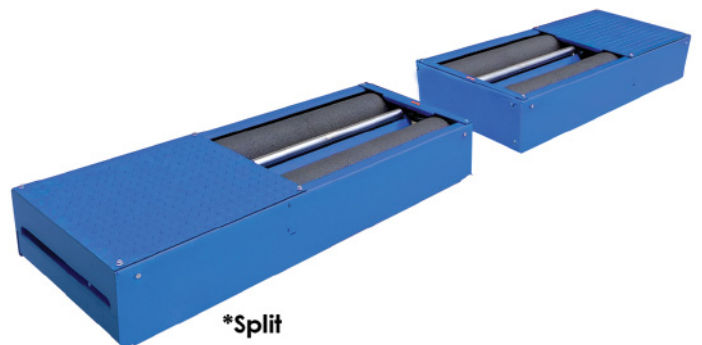
✓ FRQ- Brake Tester ATL

Max Load	4 T
Overall Width	682 mm
Overall Height	290 mm
Roller Size	208/1,000 mm
Vehicle Class	Class IV/VII

The FRQ - ATL 7 is a light vehicle brake tester made to test class VII vehicles. With a test limit of 3500kg and a step over limit of 4000kg. Coming standard as a split unit it naturally lends itself to being put either side of an inspection pit or can be installed side each other. The FRQ is approved for use in ATL stations making it suitable for DVSA testing sites that test both class IV and VII vehicles.



*Standard



*Split

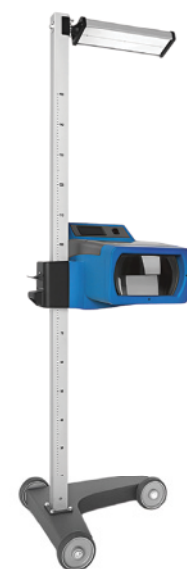


RY-500H/RY-500L

Measuring Range	0 to -6%
Connection	RS232
Column Height	1,660 mm
No. of Wheels	4
Vehicle Class	Class IV/VII (L-Model) HGV (H-Model)

The RY-RAR analogue headlight tester incorporates a digital luxmeter and laser pointer and top laser, accompanied by a graduated verification panel enabling the reading of various light types.

The measurement range encompasses inclinations from 0 to -6%. Standard features consist of an analogue luxmeter, alignment lasers, polycarbonate lens and a column divided into two sections for enhanced versatility.

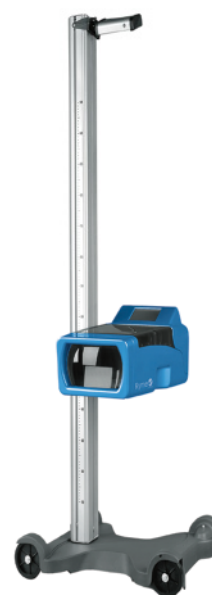


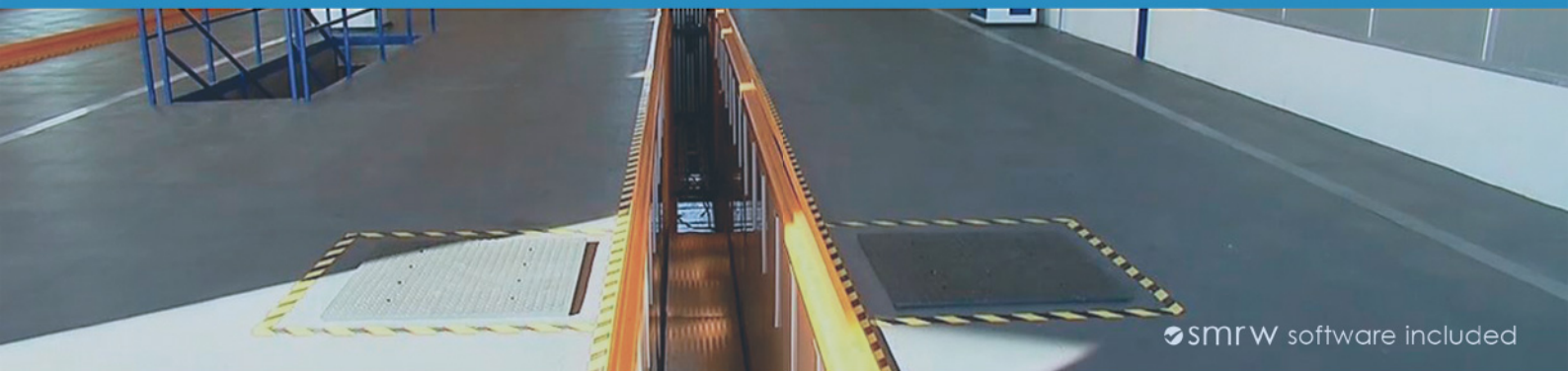
RY-RM Headlight Tester

Screen Size	5.7inch
Connections	RS232/USB
Column Height	1,700 mm
Software	SMRW
No. of Wheels	4

The RY-RM is an advanced electronic headlight analyser featuring a built-in camera tailored for comprehensive headlight analysis. Its user-friendly interface seamlessly directs operators through test procedures with utmost accuracy and ease.

Enhanced stability and precision are ensured by the large column, while a counterweight with the column facilitates smoother sliding of the optical chamber. Standard features include a viewfinder, two alignment lasers and both RS-232 and bluetooth connection methods. The 5.7inch touch screen display is able to reverse for easy access no matter the configuration of your workshop.



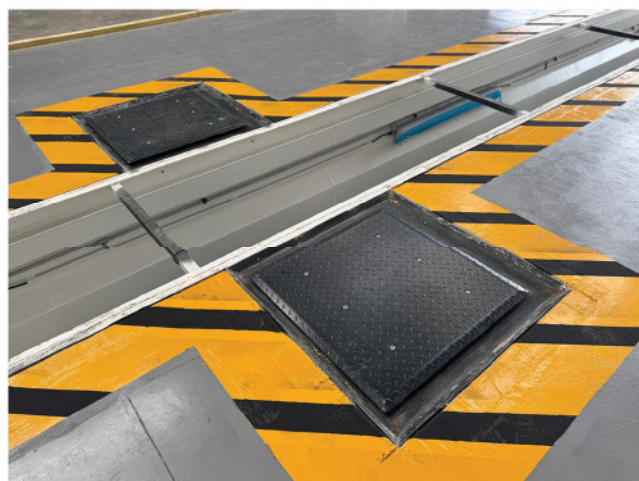
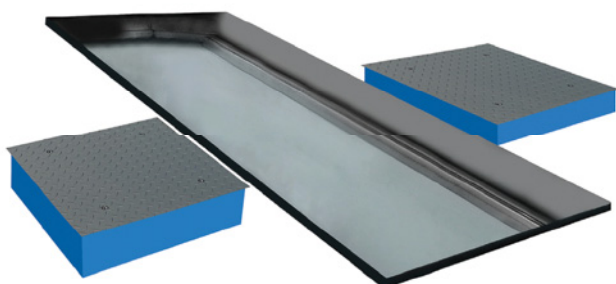


SMRW software included

DHU-TRUCK

Max Axle Load	20 T
Motor	2.2 kW
Plate Weight	290 kg
Plate Size	820x820x 196 mm
No. of Plates	2
Vehicle Class	HGV/PSV

The DHU TOTAL electro-hydraulic play detector evaluates the state of vehicle axles and their components, enabling the detection of wear and resulting play in vehicles weighing up to 20 tonnes. It operates using hand-held torch switches to guide two ground-level test plates through four movements each, all controlled by a single device. Standard equipment includes two electro-hydraulic play detectors with four movements each, a hydraulic power group, an electrical box, and a control torch with a cable.

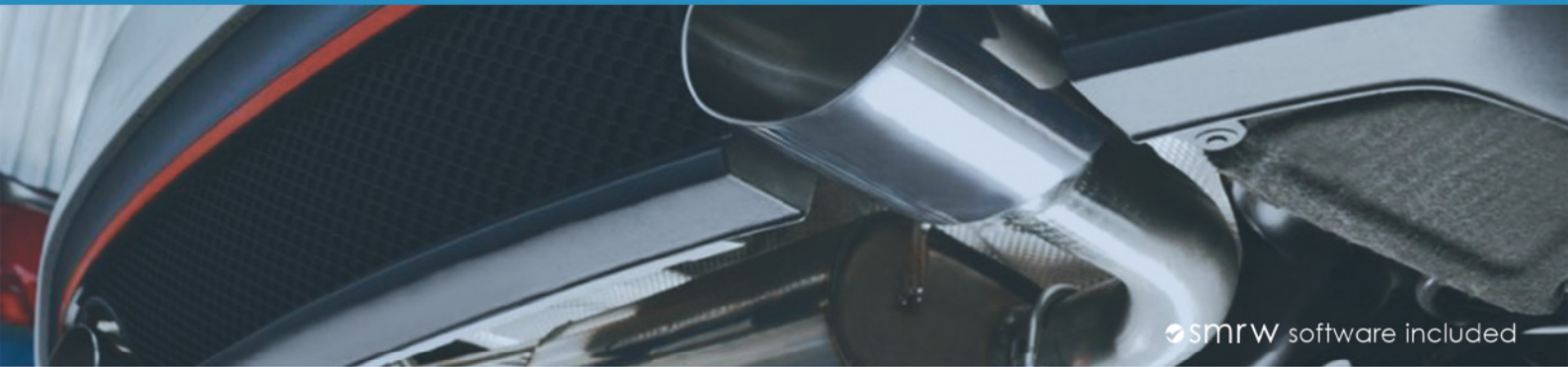


DHU-FLEX

Max Axle Load	20 T
Motor	2.2 kW
Plate Weight	290 kg
Plate Size	820x820x 196 mm
No. of Plates	2
Vehicle Class	HGV/PSV

The DHU-Flex is our above floor solution, mainly used in sites with concrete pits where extensive groundworks can jeopardize the pit integrity. The DHU Flex will work by adding a base plate that is bolted into the floor keeping the play detector secure when driving over. A range of hose lengths allow the cabinet containing the pump to be placed anywhere on the site making the DHU Flex compliant with a range of lane types like petrol-regulation test lanes as the electronics can be kept external to the lane.





SMRW software included

RY-4500UK - Combi Emissions Tester

Fuel Types	Petrol and Diesel
Vehicle Class	All Classes
Height (mm)	1600
Width (mm)	600
Depth (mm)	700

The RY-4500UK is our combined emissions tester that provides workshops with a flexibility when testing both petrol and diesel vehicles of all classes. The smoke meter is completely wireless with a charging base located in the cabinet making it fast and simple to test vehicles no matter where they are. We also provide a wireless oil temperature probe as standard along with a EOBD device to view EOBD data and fault codes, we can also show diesel RPM and powertrain diagnostic data. The gas analyser has the latest software required for MOT and works on all petrol vehicles, with this device there are no long wait times before use and stays easy to use as well as reliable. If you only require the Diesel components of this tester we can supply this not only in the cabinet shown below but attached to our braketester cabinet reducing the amount of space taken.



RY-4500 UK



RY-4600 UK
**Diesel only*



✓ Ryme-CL8.5T Battery Column Lift

Load Capacity	8500 kg Per Column
Max Lifting Height	1700 mm
Fork Length	380 mm
Lifting Time	120 sec
Fork Width	240 - 624 mm
Motor Power	2.2 kW
Battery Charger	240V Single Phase
Unit Weight	810kg Per Column
Column Dimensions	(L)1384 x (W)1145 x (H)2465 mm

The Ryme Wireless Heavy Duty Column Lift – 34 Tonne is a powerful 4-column mobile lifting system designed for heavy commercial vehicles. Powered by rechargeable batteries and a 24V DC hydraulic motor, it operates completely wirelessly for maximum mobility and safety. The 7" touchscreen display shows lift height, battery level, and system status, while large glovefriendly controls make operation simple and efficient. Built with advanced synchronization technology, the lift ensures smooth, level raising and lowering, automatically stopping at 1700mm or if column height variance exceeds 50mm. Each column features a mechanical safety lock and emergency stop. The system includes a trailer lifting mode, can be expanded with additional column pairs for increased capacity, and is CE certified with an IP54 rating for durability.





Ryme-2P4T

Load Capacity	4,000 kg
Lifting Time	45's
Max Lifting Height	2,000 mm
Overall Width	3,490 mm
Cross Beam Height	4,150 mm

Introducing our versatile automotive lift, designed for professional workshops and garages. With a width between columns of 2,795 mm and a robust load capacity of 4,000 Kg, it's ideal for handling various vehicles. Featuring a minimum height of 95 mm and a lifting height of 2,000 mm, this lift offers accessibility and ample clearance for maintenance tasks. The column height, ranging from 4,015 mm to 4,150 mm, ensures maneuverability during lifting operations. Equipped with adjustable arms ranging from 620 mm to 1,240 mm (or 825 mm to 1,440 mm), and powered by a Trifásico 230/400 V 50/60 Hz motor with 2.2 KW rating, it delivers reliable performance. With a lifting time of just 45 seconds and an overall width of 3490 mm.



Ryme-2P5.5T

Load Capacity	5,500 kg
Lifting Time	70's
Max Lifting Height	1,900 mm
Overall Width	4,030 mm
Cross Beam Height	5,060 mm

The load-bearing trolleys and arms are reinforced for added safety, featuring three-element support arms with a minimum height of 75 mm, protection against foot crushing, and automatic arm locking. They utilize Nylatron slides with a low friction coefficient and are controlled via a unit with an on/off switch and separate controls for upward and downward movements. Safety catches can be manually released, and lifting carriages are synchronized with obstacle sensors using cables. In case of hydraulic system failure, there's an automatic safety stop, while two buffer extensions (70 and 140 mm) allow lifting various vehicle types with ease.

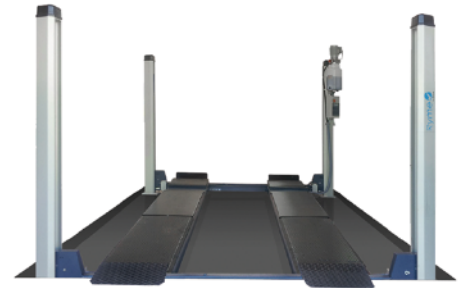




Ryme-4P1620L-MOT/ATL

Load Capacity	5500kg
Lifting Height	1800mm
Platform Length	5700mm
Overall Width	3000mm
Overall Length	6470mm
Lifting Time	45s
Vehicle Class	Class IV/VII

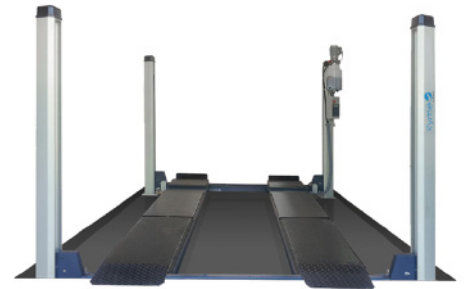
The column design eliminates longitudinal welds for enhanced durability. An electro-hydraulic lifting system, operated by a single-effect cylinder, ensures efficient functionality. Automatic platform locking and various safety measures, including protection against obstacles and hydraulic system overpressure, enhance safety. Controls feature "dead man" type pushbuttons for user convenience. Additional features include pulley zone protection, smooth platforms and automatic release of safety wedges for streamlined operation



Ryme-4P1600L-MOT/ATL

Load Capacity	5000kg
Lifting Height	1800mm
Platform Length	5700mm
Overall Length	6470mm
Overall Width	3000mm
Lifting Time	45s
Vehicle Class	Class IV/VII

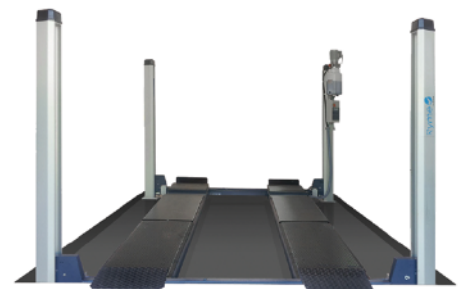
The column design boasts innovative weld-free construction. It houses an efficient electro-hydraulic lifting system operated by a single-effect cylinder. Automated platform locking, safety against obstacles, and hydraulic system overpressure prevention ensure safety. Additional features include special pulley zone protection, smooth platforms, an upper height limit switch, and automatic safety wedge release



Ryme-4P1400L-MOT/ATL

Load Capacity	4000kg
Lifting Height	1800mm
Platform Length	4520mm
Overall Length	5320mm
Overall width	2800mm
Lifting Time	45s
Vehicle Class	Class IV

The equipment boasts an electro-hydraulic lifting system with a simple-effect cylinder, ensuring efficient operation. Its innovative design features columns without longitudinal welds for enhanced durability. Platform security is guaranteed with an automatic locking system driven by electromagnets. Safety wedges release automatically with the press of a button. Optional features include a movable scissor jacking beam. Smooth platforms facilitate seamless operation, supported by a comprehensive safety system.

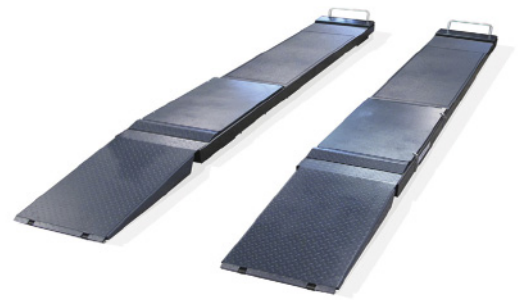




✓ Ryme-SL5.5T-Wheel Alignment Lift

Load Capacity	5500 kg
Lifting Height	1880 mm
Platform Length	5030 mm
Platform Width	660 mm
Motor	2.2 kW
Min Height	240 mm

The equipment offers a load capacity of 5500 kg, with platform widths of 660 mm and lengths of 5030 mm (plus a 1180 mm ramp). The lifting height extends to 1880 mm, with a minimum height of 240 mm. Powered by a 3-phase motor delivering 2.2 kW, it ensures reliable performance. The auxiliary lift features a 3500 kg load capacity, with a platform length ranging from 1450 mm to 1750 mm and a width of 610 mm. The lifting height for the auxiliary lift extends to 450 mm, adding versatility for various lifting needs.



✓ Ryme-SL5T-MOT/ATL

Load Capacity	5000kg
Lifting Height	2160mm
Platform Length	5030mm
Platform Width	665mm
Motor	2.2kW
Min Height	330mm
Vehicle Class	Class IV

The equipment boasts a substantial load capacity of 5000 kg, with a platform width of 665 mm and a length spanning 5030 mm. The distance between platforms measures 820 mm, while the lifting height reaches up to 2160 mm. Its platform design features sliding rear platforms equipped with recesses for turning plates, ensuring versatile functionality. With a minimum height of 330 mm, the equipment accommodates various lifting needs. It offers reliable performance for a range of applications.



✓ Ryme-SL5.5T-MOT/ATL

Load Capacity	5500 kg
Lifting Height	1880 mm
Platform Length	5030 mm
Platform Width	660 mm
Motor	2.2 kW
Min Height	240 mm
Vehicle Class	Class VII

The equipment impressively handles a loading capacity of 5500 kg, with a platform width of 700 mm and a length spanning 5100 mm. Ensuring versatility, the distance between platforms measures 840 mm, while the maximum lifting height reaches up to 1900 mm. Equipped with sliding rear platforms featuring class VII ATL MOT, it offers flexibility in operation. Additionally, it maintains a minimum height of 240 mm, ensuring usability across various applications.





Ryme-SSL3T

Load Capacity	3,000 kg
Lifting Height	1,955 mm
Platform Length	1,975 mm
Overall Width	1,990 mm
Motor	2.2 kW
Min Height	110 mm

This fully automatic system operates without air or a compressor, featuring a low-profile scissor design with a unique safety system. It's versatile for various applications like car lifts, scissor lifts, and garage equipment. With a load capacity of 3,000 kg, platform lengths of 1,500-1975 mm, and widths of 635 mm, it has a minimum height of 110 mm and a maximum lifting height of 1,955 mm. Powered by a 3-phase 230/400V 50/60Hz motor with 2.2 kW, it operates quietly at around +/-65dB.



Ryme-SSL3.2T

Load Capacity	3,200 kg
Lifting Height	1,000 mm
Platform Length	1,460 mm
Overall Length	1,994 mm
Overall Width	1,840 mm
Lifting Time	40's

Introducing the Electro-Hydraulic Scissor Lift—a robust solution for tire shops, body shops, and workshops. With a hefty 3,200 kg capacity and four cylinders, it swiftly lifts vehicles to a meter in just 40 seconds. Versatile on both three-phase and single-phase power supplies, it fits diverse setups in a compact 2-square-meter footprint. The control console ensures precise operation, while a 2-meter flexible connection lead enables optimal positioning. With its strength, efficiency, and adaptability, this lift elevates workshop capabilities effortlessly.



Ryme-SSL3.5T

Load Capacity	3,500 kg
Lifting Height	1,955 mm
Platform Length	1,975 mm
Platform Width	635 mm
Motor	2.2 kW
Min Height	110 mm

This fully automatic system operates without air or a compressor, featuring a low-profile scissor design with a unique safety system. It's versatile for various applications like car lifts and garage equipment, including short platform scissor lifts. With a load capacity of 3,500 kg, platform lengths range from 1,500 to 1,975 mm and widths are 635 mm. It has a minimum height of 110 mm and a maximum lifting height of 1,955 mm, with a platform distance of 720 mm. The overall width is 1,990 mm, and it's powered by a 3-phase motor delivering





RY-SAT26 Tyre Changer

Chuck Capacity	14"-26"
Motor	2.2kW
Max Wheel Weight	700kg
Max Wheel Diameter	1,500 mm
Dimensions	1,520(D)x1,270(H) x2,300(W)

The Ryme SAT26 is a sturdy and powerful tyre changer designed for commercial vehicles, ensuring safe and straight forward tyre changing operations. With a maximum wheel weight capacity of 700 kg and chuck capacity ranging from 14" to 26", it accommodates various wheel sizes with ease. The bead breaker boasts a power of 1,500 kg, guaranteeing efficient tyre dismounting. Weighing 586 kg, it offers stability and reliability during operation. The wheel loading board connects seamlessly with the tool-holder carriage, facilitating smooth workflow. Equipped with a wired control board, the system is user-friendly and easy to operate.



RY-WB200 Wheel Balancer

Rim Diameter	8"-35"
Motor	2.2 kW
Max Wheel Weight	200 kg
Max Wheel Diameter	1,300 mm
Dimensions	1,340(H)x2,060(W) x1,500(D) mm

This system offers two calibration programs: one for cars and another for trucks. It allows for software updates via USB key. Featuring an inverter brake with automatic unbalance position detection, it ensures precise balancing. The WHEEL FREE program operates at low RPM, facilitating visual inspection of tyre eccentricity. Additionally, it includes a built-in pneumatic scissors lift with manual control for lifting. With a maximum wheel weight capacity of 200 kg and accommodating wheel diameters up to 1,300 mm and rim widths ranging from 50 to 500 mm, it caters to diverse needs. Balancing speed ranges from 8 to 20 seconds, with an RPM of less than 100. Weighing just 270 kg, it offers portability and convenience.





Ryme-TC528S



Rim Diameter	12"-28"
Overall Height	2,210 mm
Overall Length	1,100 mm
Overall Width	1,500 mm
Max Wheel Width	470 mm
Max Wheel Diameter	47.5"

Highly durable semi-automatic tyre changer featuring a side-swinging arm designed for use with cars and light commercial vehicles. Its reinforced structure is engineered for heavy-duty usage. Equipped with two optional helper arms, it guarantees optimal performance even when working with challenging Low Profile and Run Flat tires



Ryme-TC535S



Rim Diameter	10"-24"
Overall Height	1,970 mm
Overall Length	1,280 mm
Overall Width	1,750 mm
Max Wheel Width	340 mm
Max Wheel Diameter	39"

Automatic tyre changers designed for cars and light commercial vehicles, capable of handling Low Profile and Run Flat tyres . These machines feature a special built-in device for tubeless inflation, along with an air tank and a manometer to facilitate rapid tyre inflation. They accommodate rims ranging from 12" to 30" (adjustable).



Ryme-TC524SW



Rim Diameter	10"-24"
Overall Height	1,720 mm
Overall Length	1,110 mm
Overall Width	930 mm
Max Wheel Width	340 mm
Max Wheel Diameter	39"

Semi-automatic tyre changer designed for cars and light commercial vehicles, offering a rim capacity ranging from 10" to 24" . It features a side-swinging tool head arm with a manual stop, requiring minimal space. Equipped with a double-acting bead breaker cylinder and clearance regulation systems fitted with conic bushes for easy maintenance.





Ryme-WB1000

Rim Diameter	12"-35"
Overall Height	1,360 mm
Overall Length	1,580 mm
Overall Width	900 mm
Max Wheel Width	1,120 mm
Max Wheel Diameter	44"

Wheel balancers equipped with a touch-screen interface. The 21" heavy-duty touch screen is designed for rigorous and demanding usage, accommodating glove use as well. The balancers feature automatic acquisition of wheel distance, width, and diameter data via accelerometer, along with a laser indicator for precise alignment.



Ryme-WB820

Rim Diameter	8"-35"
Overall Height	1,230 mm
Overall Length	1,650 mm
Overall Width	900 mm
Max Wheel Width	1,120 mm
Max Wheel Diameter	44"

These wheel balancers come with an LCD monitor and standard lift, along with a sonar device for automatic wheel width detection, a laser indicator, and a scissor lift. The scissor lift can support wheels weighing up to 75 kg and is equipped with electronically controlled lifting and lowering functions, which are managed by the machine's software. Furthermore, the lift automatically lowers when lowering the wheel cover protection. The balancing speed is 5.5 seconds



Ryme-WB20

Rim Diameter	8"-35"
Overall Height	1,400 mm
Overall Length	1,250 mm
Overall Width	960 mm
Max Wheel Width	1,120 mm
Max Wheel Diameter	44"

View data on a high-visibility dual display, featuring an integrated keyboard tailored for swift and intuitive selection of balancing modes and quick access to functions. Automatically acquire wheel distance, diameter, and width data, complemented by an external sensor gauge. LED lighting aids in precise inner gauge positioning and application of weights. Achieve balancing in just 5.5 seconds.





Ryme-WA328

Total Toe	+48°
Max Camber	+10°
Caster	+30°
No. of Sensors	8
Unit Size	1,050x1,000x1,600 mm
Vehicle Class	Class IV/VII/HGV

Designed to accommodate heavy vehicles, trucks, trailers, and semi-trailers, this system comes prepared for alignment tasks (optional KIT TRUCK). It includes a comprehensive data bank covering more than 40,000 car and van models. Equipped with CCD sensors for precise angle measurements, it ensures accuracy in alignments. Optional KIT DIAPO offers animated graphics to assist with adjustments, enhancing ease of use and efficiency. Technical data includes Total Toe ($\pm 48,00^\circ$), Camber ($\pm 10,00^\circ$), Caster ($\pm 30,00^\circ$), King Pin ($\pm 30,00^\circ$), Set Back ($\pm 24,00^\circ$), Thrust Angle ($\pm 24,00^\circ$), Number of sensors (8 CCD), and Data Transmission (Radio 2.4 GHz).



Ryme-G20

Total Toe	+48°
Camber	+10°
Caster	+30°
King Pin	+30°
Unit Size	2,749(W)x2,800(H) mm
Vehicle Class	Class IV/VII

The G20 is a modern, user-friendly 3D wheel aligner designed for quick and reliable alignment of cars and light commercial vehicles. Featuring easy-to-read software and graphics on a Windows platform, it offers remote technical assistance and high-resolution cameras for precise measurements. With smaller, lighter targets equipped with anti-reflective filters, users can choose the desired R.O.C. procedure type. Optional features include the Drive-On-Assistant with double cameras and a smart horizontal bar raising system for added convenience.





More workshops are turning to sleek, clean and ergonomic approaches to tool and equipment storage. This has also become a dealer standard for many vehicle manufacturer dealer networks, originally the exotic and high performance, however this is now becoming the norm in mainstream dealer workshops. Although this trend started in the car market, we are now seeing more Commercial vehicle repairers opting for this design as the truck workshops move away from the dark oily environments they once were.



As Ryme Worldwide LTD have partnered with DEA, a global market leader in this area, we are now able to offer bespoke solutions tailored to fit and suit your workshop environment, including not only the tool storage, but a complete working station, including delivery of the engine and transmission fluids, single and 3 phase electrical sockets and air and water outlets, as well as IT equipment should you need it. In fact we can integrate anything in to our system including brake tester and lift controls. With a full range of colours, we can follow all corporate images. For a no obligation workshop survey, please contact us



Option A



Option B



Option C

Whilst we offer complete bespoke solutions tailored to your individual requirements, we also have pre designed sets such as the A, B, and C models shown above



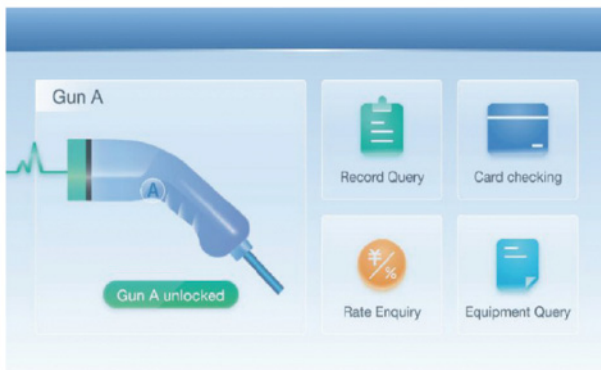
🔌 RY-DC 40 Portable EV Charger

Power input	16A/32A/63A 3ph
Charging output	7kW/20kW/40kW
Unit Height	37cm
Unit Length	21cm
Unit Width	55cm
Connection Type	Bluetooth (App)

The Ryme DC-40 is a mobile charger that plugs directly into a 63amp 3 phase commando plug socket to be able to achieve a 40kW charge on all CCS2 vehicles.

Being on casters, the Ryme DC-40 is perfect for multi-use workshop spaces, allowing flexibility for EV charging around the entire workshop.

The Ryme DC-40 has been designed to support workshops with out charging facilities or site with facilities that are over crowded. The reason this is so special is because it can be speced to suit pre-exisitng electrical infastructure as it can be used in a range of modes to suit 3-phase infastructure





✓ EV Bay - 6.5T Capacity 🚗 🚚

The Ryme Electric vehicle bay includes three main components: Two post lift, Electric tool station and battery removal Table We also include a portable electric vehicle charger in either a 40kw or 60kw, allowing a moveable charging station in whichever bay you are going to be working in. The two post lift is typically a 6.5T lift which is more than ample for all electric cars and vans. The lift comes equipped with all the adapters for lifting a wide range of vehicles. The battery table lift has a 1.5T lifting capacity which lends itself for a wide range of uses outside of removing batteries for example lowering gearboxes and engines. The battery table works electronically saving time and effort making it simple and easy to lower and raise batteries in and out of vehicles. We also provide all the attachments for all vehicle brands. Insulated tools are vital for working on electric vehicles to avoid any accidents, we provide a whole kit for this making it easy to find the tool you need. Not only do we provide the tools but also the clocks for discharging before maintenance, but also all the signage that is required in a modern workshop.





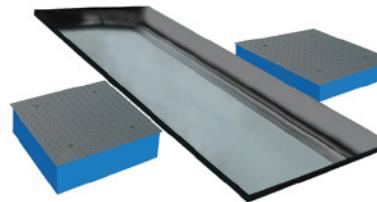
✓ Class IV/VII MOT Package



FRQ-Braketester
See page 5
for more information



RY-500L
See page 6
for more information

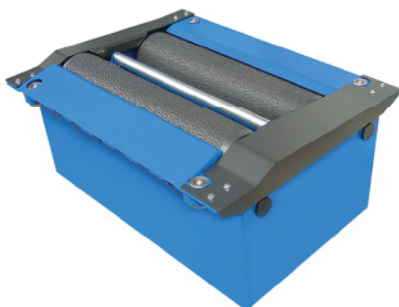


DHL Total
See page 7
for more information

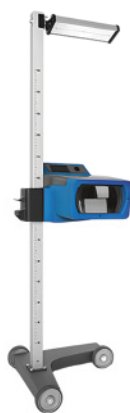


RY-4500UK
See page 8
for more information

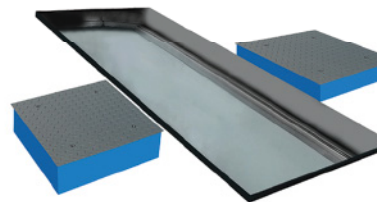
✓ HGV/PSV MOT Package



FRU 20 UK-Brake tester
See page 2
for more information



RY-500H
See page 6
for more information



DHU TRUCK
See page 7
for more information



RY-4600UK
See page 8
for more information



Over the past two decades, there has been a notable surge in the adoption of steel fabricated pits, a trend driven by a myriad of compelling reasons. This growing preference can be attributed to a combination of factors, each contributing to the appeal and practicality of these structures. Firstly, their swift and tidy installation process has emerged as a standout feature, particularly attractive to businesses seeking efficient solutions without prolonged downtime. Furthermore, steel pits offer the advantage of fostering drier and cleaner working environments, a significant change for industries where hygiene and safety are paramount concerns. This aspect not only enhances operational efficiency but also contributes to employee comfort and well-being



The incorporation of white steel walls and lighting represents another compelling aspect of steel pits, serving to significantly improve illumination levels during vehicle inspections and daily operations. This feature not only enhances visibility but also contributes to a more conducive workspace environment. Furthermore, steel fabrication inherently lends itself to better structural integrity compared to alternative materials, ensuring long-term durability and robustness. This aspect is particularly crucial in environments subject to heavy usage and demanding conditions, where reliability is non-negotiable

Our commitment to meeting individual requirements is reflected in the customizable nature of our steel pits. From facilitating air line connections to incorporating specialized lighting and equipment recesses for items like oil drainers with waste oil evacuation points, we ensure comprehensive functionality tailored to specific needs. Whether geared towards routine service and maintenance or rigorous DVSA testing and inspection procedures, our designs prioritize versatility and efficiency. By addressing diverse operational demands with precision and effectiveness, we empower businesses to optimize their workflow and achieve superior outcomes.





www.ryme-worldwide.co.uk



Ryme Worldwide Ltd

Ryme Worldwide Ltd. Unit 1a Wimbledon Ave, Brandon, Suffolk IP27 0NZ
Phone : 01842 731333 | Mob: 07753 318554 | Email: Salesuk@ryme.com

Ryme 
worldwide